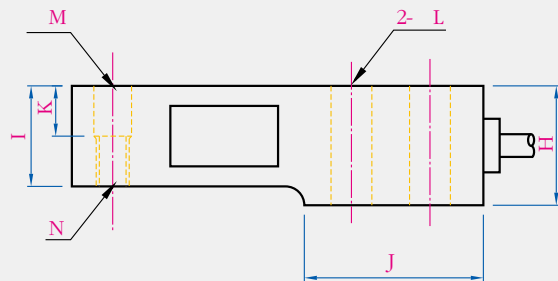
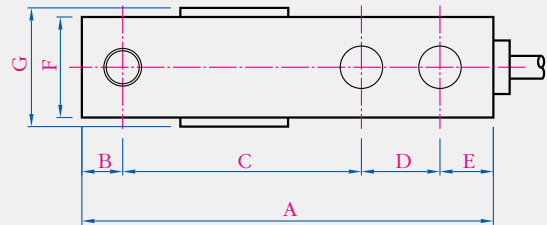


Shear beam load cell 500kgf ~ 10tf



022+ 023

POINT
PB1 Series

Features
Single ended shear beam
High accuracy
Protection class IP67

For
Platform & Weighing system
Other force measuring

Material
Nickel plated steel

Cable Color Code
EXC.(+) : RED EXC.(-) : WHITE
SIG.(+) : GREEN SIG.(-) : BLUE
SHIELD : YELLOW

Specifications			
Rated Capacity		500kgf, 1, 2, 3, 5, 10	tf
Rated output		3±0.005%	mV/V
Non - linearity		0.03	%
Hysteresis		0.03	%
Repeatability		0.02	%
Creep for 20min		0.03	%
Zero Balance		1	%
Temperature range	Compensated	-10~70	°C
	Safe	-20~80	°C
Temp.effect on	Rated Output	0.02	%/10°C
	Zero balance	0.03	%/10°C
Resistance	Insulation(Min)	2,000	MΩ
	Input	400±30	Ω
Excitation	Output	350±3.5	Ω
	Recommended	10	V
Safe overload	Maximum	15	V
		150	%
Electrical connection		∅6mm × 4C × 3(0.5~2tf)	M
		∅6mm × 4C × 6(3~10tf)	M

Capacity	A	B	C	D	E	F	G	H	I	J	K	∅L	∅M	N
500kgf, 1, 2tf	131	13	76	25	17	32	37	38	32	57	16	13.5	13.5	M12 x 1.75P
3,5tf	173	19	95	38	21	38	43	45	38	76	19	20	21	M20 x 2.5P
10tf	222	25	121	51	25	51	56	57	51	102	25	27	26.5	M24 x 2P

(THE ABOVE PRODUCTS IS ORDER PRODUCTION TYPE)