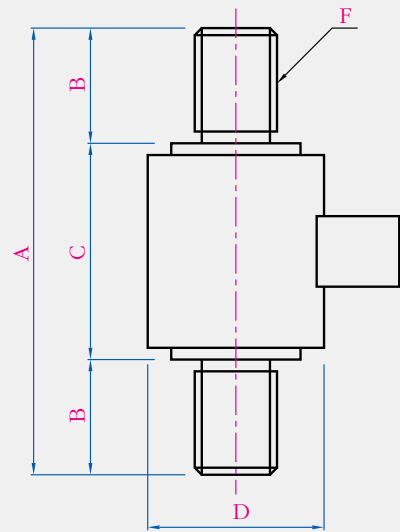
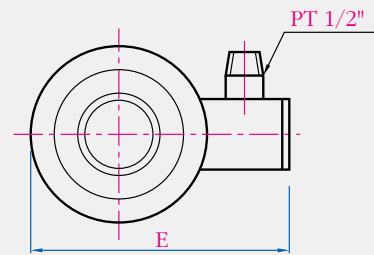


## Tension load cell 20tf ~ 1,000tf



010 + 011

POINT  
PT5 Series

Features	
Both screw type	
High capacity design	
Protection class IP66	
For	
Testing & Weighing system	
Other force measuring	
Tension application	
Material	
Paint finished steel	
Cable Color Code	
EXC.(+) : RED	EXC.(-) : WHITE
SIG.(+) : GREEN	SIG.(-) : BLUE
SHIELD : YELLOW	

Specifications			
Rated Capacity		20, 30, 50, 100, 200, 300, 500, 1000	tf
Rated output		1.5±0.005%	mV/V
Non - linearity		0.1	%
Hysteresis		0.1	%
Repeatability		0.1	%
Creep for 20min		0.03	%
Zero Balance		1	%
Temperature range	Compensated	-10~40	°C
	Safe	-20~70	°C
Temp.effect on	Rated Output	0.03	%/10°C
	Zero balance	0.03	%/10°C
	Insulation(Min)	2,000	MΩ
Resistance	Input	700±7	Ω
	Output	700±7	Ω
	Recommended	10	V
Excitation	Maximum	15	V
	Safe overload	150	%
Electrical connection		ø9mm × 4C × 3	M

Capacity	A	B	C	øD	E	I
20tf	190	49	92	75	110	M42×3P
30tf, 50tf	260	65	130	88.5	123	M56×3P
100tf	330	90	150	101	136	M80×4P
200tf	400	115	170	139	174	M110×4P
300tf	450	128	194	139	174	M125×4P
500tf	520	160	200	215	250	M160×6P
1000tf	600	200	200	266	301	M200×6P

(THE ABOVE PRODUCTS IS ORDER PRODUCTION TYPE)