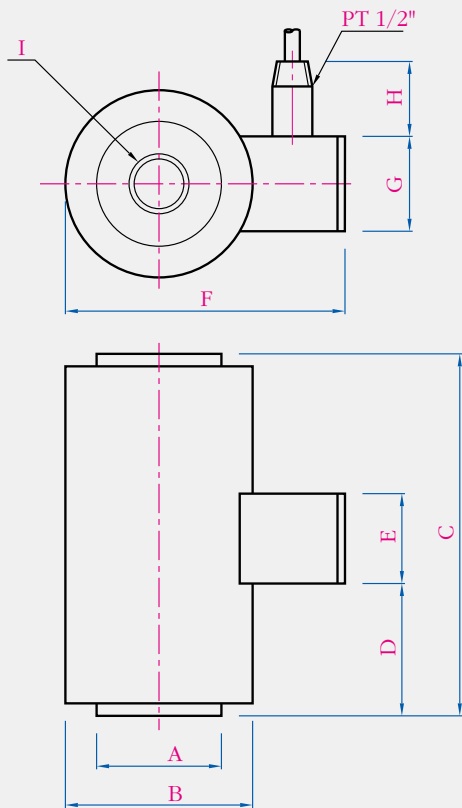


Tension load cell 2tf ~ 10tf



010+ 011

POINT
PT6 Series

Specifications			
Rated Capacity		50, 100, 200, 500, 1tf, 2tf, 3tf, 5tf, 10tf, 20tf	kgf
Rated output		3±0.003%	mV/V
Non - linearity		0.03	%
Hysteresis		0.02	%
Repeatability		0.02	%
Creep for 20min		0.03	%
Zero Balance		1	%
Temperature range	Compensated	-10~70	°C
	Safe	-20~80	°C
Temp.effect on	Rated Output	0.03	%/10°C
	Zero balance	0.03	%/10°C
Resistance	Insulation(Min)	2,000	MΩ
	Input	350±3.5	Ω
Excitation	Output	350±3.5	Ω
	Recommended	10	V
	Maximum	15	V
Safe overload		150	%
Electrical connection		ø6mm × 4C × 3	M

Features

- Robust high capacity design
- High Rated Output
- Low price
- Protection class IP66

For

- Hopper & Tank Weighing system
- Testing & Weighing system
- Other force measuring
- Tension & Compression application

Material

Paint finished steel

Cable Color Code

EXC.(+) : RED EXC.(-) : WHITE
SIG.(+) : GREEN SIG.(-) : BLUE
SHIELD : YELLOW

Capacity	øA	øB	C	D	E	F	G	H	I
2,3,5tf	50	75	145	53	36	112	38	30	M24×2P DP.28
10tf	70	88	210	86	36	125	38	30	M39×2P DP.45

(THE ABOVE PRODUCTS IS ORDER PRODUCTION TYPE)